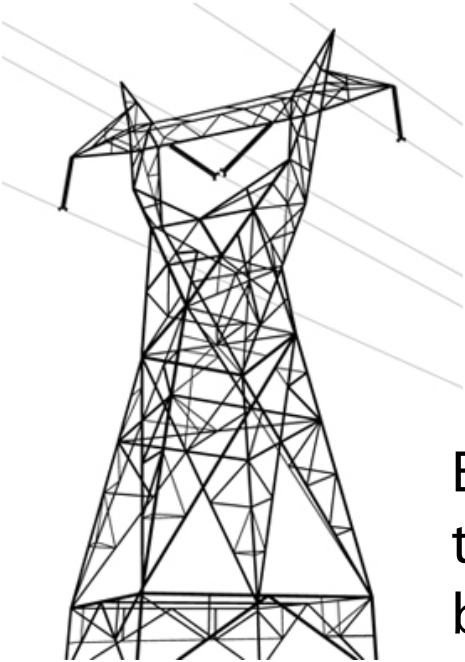




The solar panels generate power using the sun's rays.

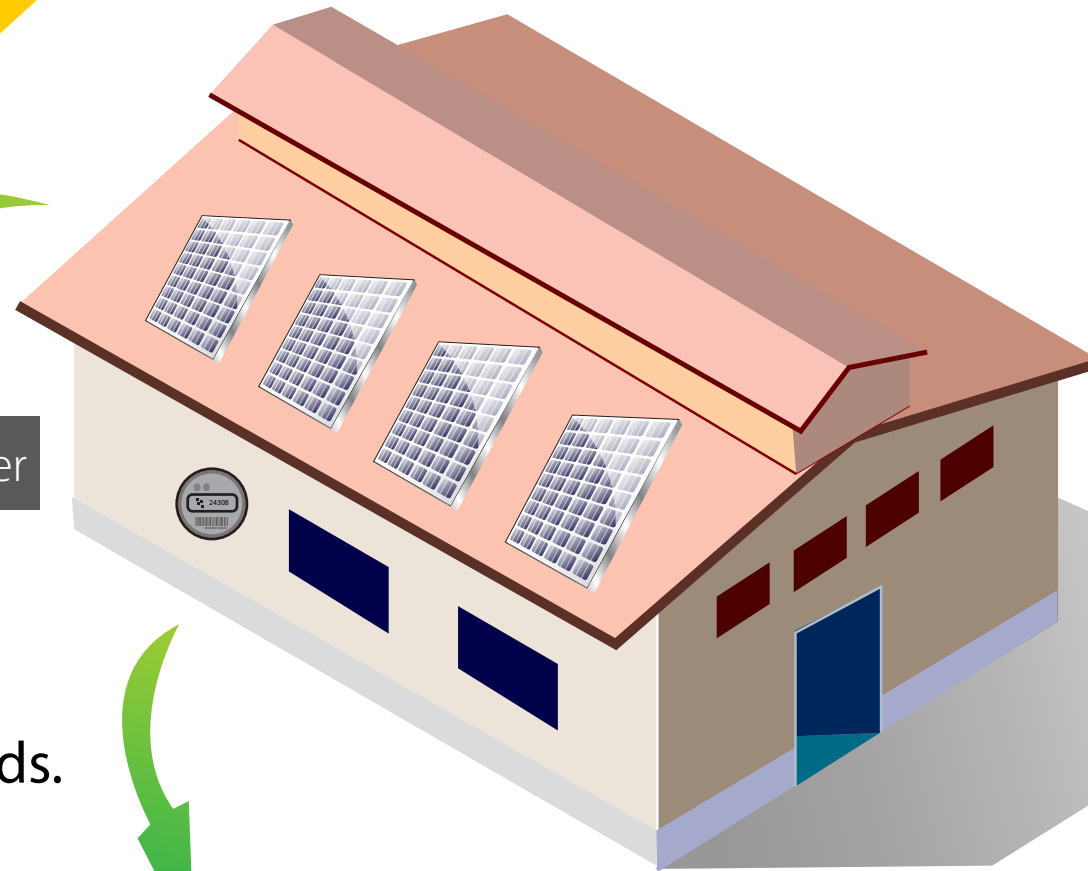
NET METERING

The electricity generated from the solar panels travels to an inverter which converts the energy from DC to AC current to be used for your property's electricity needs.



Excess power created goes back to the grid, creating a surplus balance on your hydro bill.

Inverter



A bi-directional meter is installed on your existing hydro meter to measure energy used by your property and excess energy created.

MICROFIT PROGRAM

The microFIT Program takes the energy generated directly to the grid to be distributed. Your local distribution company (LDC) pays you a fixed rate for the power you generate from the solar panels.

